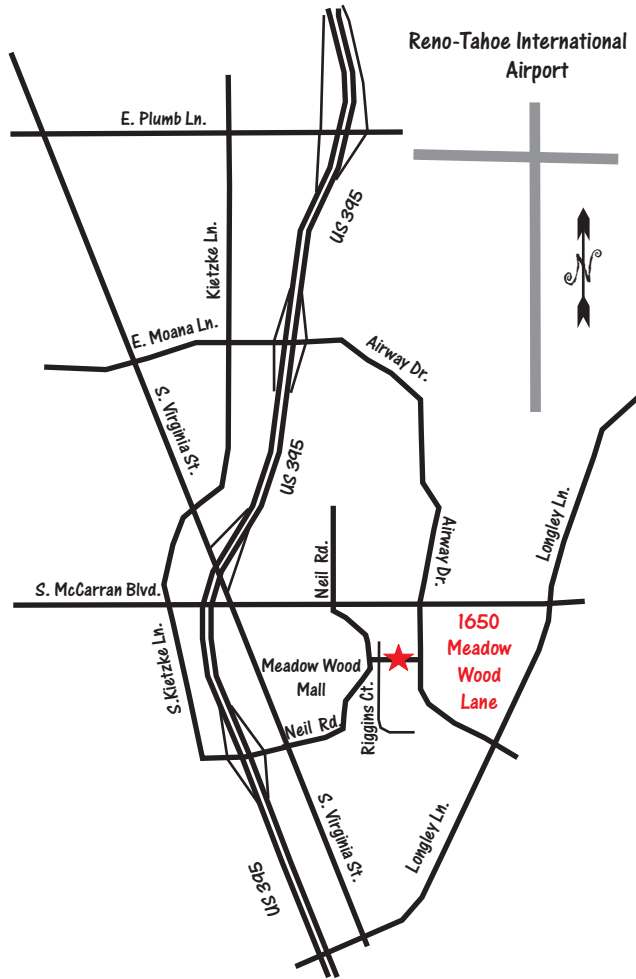


1650 Meadow Wood Lane
 Reno, Nevada 89502
 Phone: (775) 826-8822
 Fax: (775) 826-8857



Reno, Nevada

Enviroscientists was founded in 2000 to provide environmental support services to mining, geothermal companies, government agencies, and institutional clients who are required to evaluate environmental effects and maintain regulatory compliance. Enviroscientists specializes in natural resource development projects on BLM, USFS, state, and private lands. The Reno and Elko, Nevada office locations provide our staff convenient bases to serve clients with projects located throughout the western United States.

Elko's New Address - Same Phone Numbers

835 Railroad Street
 Elko, Nevada 89801
 Phone: (775) 753-9496
 Fax: (775) 753-9499



Elko, Nevada



info@enviroincus.com
www.enviroincus.com

Environment  Resources  Management

Striking the Balance



Summary of Services



Biological Services

- ◆ Baseline Vegetation & Wildlife Surveys
- ◆ Special Status Species Surveys
- ◆ State & Federal Endangered Species Permits & Consultations
- ◆ Noxious Weed Inventories & Risk Assessments
- ◆ Reclamation Monitoring & Release Assessments

Audit and Site Assessment Services

- ◆ Environmental Audits
- ◆ Transaction Screens, Phase I & Phase II Site Assessments
- ◆ Environmental Liability & Risk Assessments

Hazardous Waste and Materials Management Services

- ◆ Toxics Release Inventory Evaluations & Compliance
- ◆ Hazardous Materials Permits (RCRA, HSWA, & State Permits)
- ◆ Risk Management Plans (RMPs)
- ◆ RCRA Audits
- ◆ Emergency Response Plans
- ◆ Contingency Plans

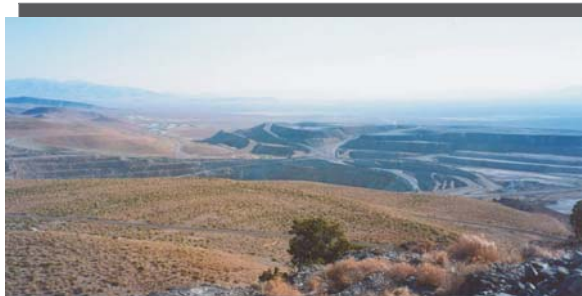
Environmental Assessment Services

- ◆ Environmental Impact Statements and Environmental Impact Reports (Federal EISs & State EIRs for NEPA & CEQA)
- ◆ Environmental Assessments (EAs)
- ◆ Resource Management Plans
- ◆ Resource-Specific Assessments
- ◆ Baseline Data Collections & Surveys
- ◆ Photo Simulations



Air Quality Assessment Services

- ◆ Emissions Inventories and Assessments
- ◆ Dispersion, Visibility, & Offsite Consequence Analysis Modeling
- ◆ Ambient Monitoring Services (Audits, QA/QC, Opacity, Design & Operation)
- ◆ Emission Control Technology Evaluations and Analysis (BACT, LAER, BART, RACM & NvMACT)



Environmental Permitting Services

- ◆ Plans of Operations
- ◆ Planning & Project Feasibility Studies
- ◆ Regulatory & Permit Compliance (Reporting & Management Services)
- ◆ Environmental Monitoring Programs
- ◆ Conditional / Special Use Permits
- ◆ Site Closure / Reclamation Plans (Cost & Bonding Calculations)
- ◆ Erosion Control/SWPPP/BMP Plans
- ◆ Environmental Construction Site Monitoring
- ◆ Clean Water Act Section 404 Permits / Delineations / Mitigation & Monitoring
- ◆ Water Pollution Control Permits
- ◆ Water Management Plans & Feasibility Studies
- ◆ TMDL Compliance Plans
- ◆ SMARA Compliance



Archaeological Services

- ◆ Archaeological Surveys
- ◆ NRHP Evaluations
- ◆ Site Monitoring
- ◆ Historical Studies
- ◆ Section 106 Consultations
- ◆ Site Treatment Plans